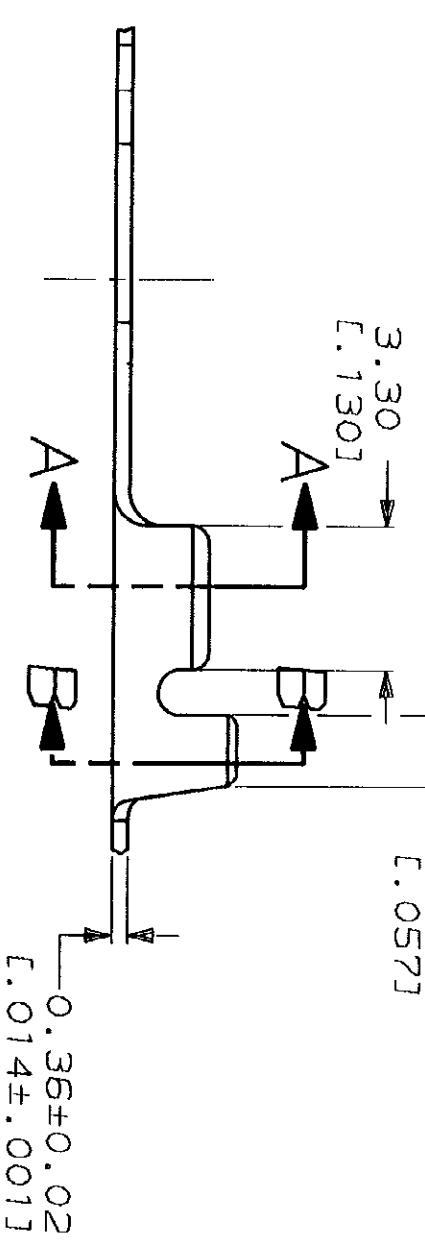
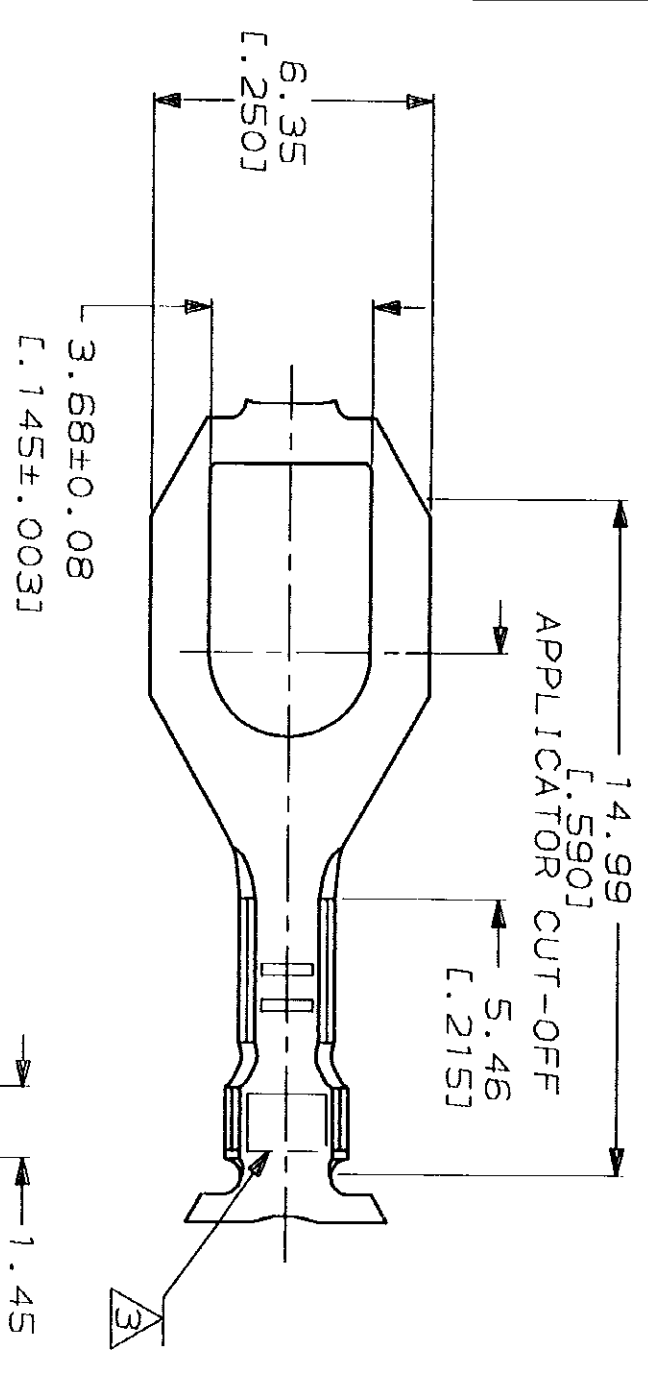


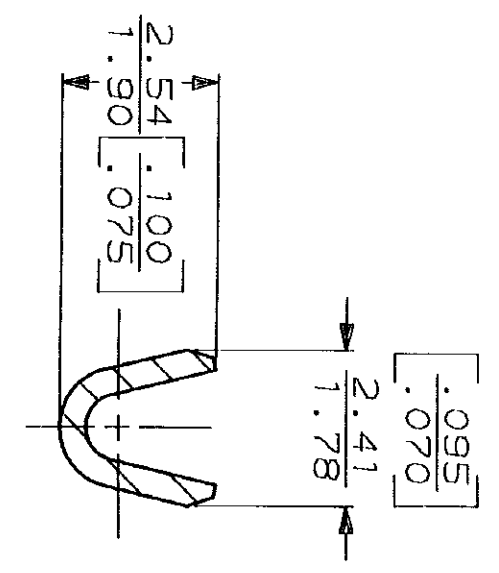
THIS DRAWING IS UNPUBLISHED. RELEASED FOR PUBLICATION
 © COPYRIGHT 19 BY AMP INCORPORATED. ALL INTERNATIONAL RIGHTS RESERVED.

LOC	DIST	P	F	ZONE	LTR	DESCRIPTION	DATE	APPD
AF	50			G		ADD -3 PER 0247-93	7/30/93	PF/GY

REVISIONS	DESCRIPTION	DATE	APPD
1	CONTINUOUS STRIP ON REELS		
2	DIMENSIONS IN BRACKETS ARE IN INCHES		
3	STAMPING: AMP FOR 60445-2 AMP* FOR 60445-3		



SECTION A-A
SCALE 10:1



SECTION B-B
SCALE 10:1

METRIC

TYPE	WIDTH	STRIP LENGTH ±.015	TYPE	WIDTH	±.051 HEIGHT	WIRE
INSUL BARREL CRIMP	2.29 [0.090]	4.83 [0.190]	F	1.57 [0.062]	1.02 [0.040]	0.24 [0.009]

MATERIAL	STUD SIZE	INSULATION RANGE
H02 PHOS BRZ	M3.5	1.22-1.98
082 BRASS	#6	[0.048-.078]

DO NOT SCALE PRINT. UNLESS SPECIFIED DIMENSIONS IN INCHES TOLERANCES ON:	DR
1. PLG DEC ± 0.25 (.010)	S/31/89
2. PLG DEC ± 0.25 (.010)	P FORTNEY
3. ANGLES	MS FEHER
	APPD S/21/89
	G VETTER
	APPD S/21/89
	R KIZO
	PRODUCT SPEC

WIRE RANGE	WIRE RANGE	PART NO
0.2-0.6mm ²	0.2-0.6mm ²	60445-3
[24-20]	[24-20]	60445-2

FINISH	APPLICATION SPEC	WEIGHT
.000080 MIN TIN PL		
PER MIL-T-10727		

NAME	SIZE	FSCH NO	DRAWING NO
AMP	B	00779	60445
AMP INCORPORATED Harrisburg, Pa. 17105	SCALE	6:1	SHEET 1 OF 1
SPADE			